

# EUROASIA

MANAGEMENT

---

GROUP



GROUP

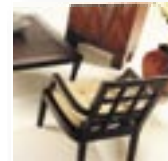
PROFILE



# EUROASIA MANAGEMENT GROUP



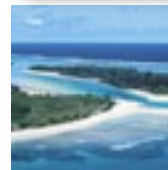
**Euro Asia Management**



**Euro Asia Hotel Contract**



**Euro Asia Timber Industry**



**Asia Pacific Resort International**





## Main Activities

Euro Asia Management Group (EAM) is a global private network that offers a range of services mainly oriented to the following sectors:

- *Tourism*
- *Hospitality and Leisure*
- *Environment*
- *Commercial and Industrial Property*
- *Furniture Design and Manufacturing*
- *Timber Industry*

EAM's activities are directed to the development of projects mainly in Asia Pacific and Europe.

EAM's objective is to offer the business advantages inherent to its areas of operations to companies operating outside of the region.

EAM's role is to provide operational and field assistance through a team of experienced specialists with international exposure and wide knowledge of the local situation.



## Consulting

EAM Consulting provides services in tourism, hospitality and leisure, commercial and industrial property sectors in Asia Pacific including:

- *Tourism Master Plan Development*
- *Market Studies and Marketing Plan*
- *Feasibility Studies and Project Financing*
- *Architectural, Interior Design and Landscaping*
- *City Planning and Regional Development*
- *Environment and Planning*
- *Environmental Impact Studies*
- *Financial Evaluation*
- *Project Finance*



*InterContinental Fiji at Natadola - Speciality Restaurant*





## Project Development

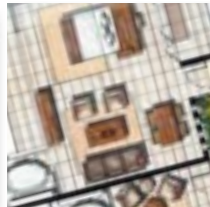
Euro Asia Management Project Development acts as promoter in the field of project development and construction management in Asia Pacific including:

### Real Estate Development

- Property and site finding
- Environmental analysis
- Maintaining local incorporation
- Management of administrative constraints

### Design and Build Development

- Technical constraints evaluation and value engineering
- Project management and regulatory approvals
- Construction management optimising local resources
- Cost control
- Project scheduling and timeframe control
- Quality assurance



*Natadola Marine Resort Site Development, Fiji Islands*



### Project Implementation

- Customized user response
- Marketing coordination
- 'Attending to' or 'Dealing with' business constraints
- Merchandising design
- Area use optimisation
- Architectural control

### Investment Control

- Asset management
- Financial design and planning
- Legal and tax compliance
- Ensuring profitability
- Leasing
- Value added services





## Project Management

EAM Project Management has the capability to manage complex projects with a continuous commitment to provide successful solutions for implementation.

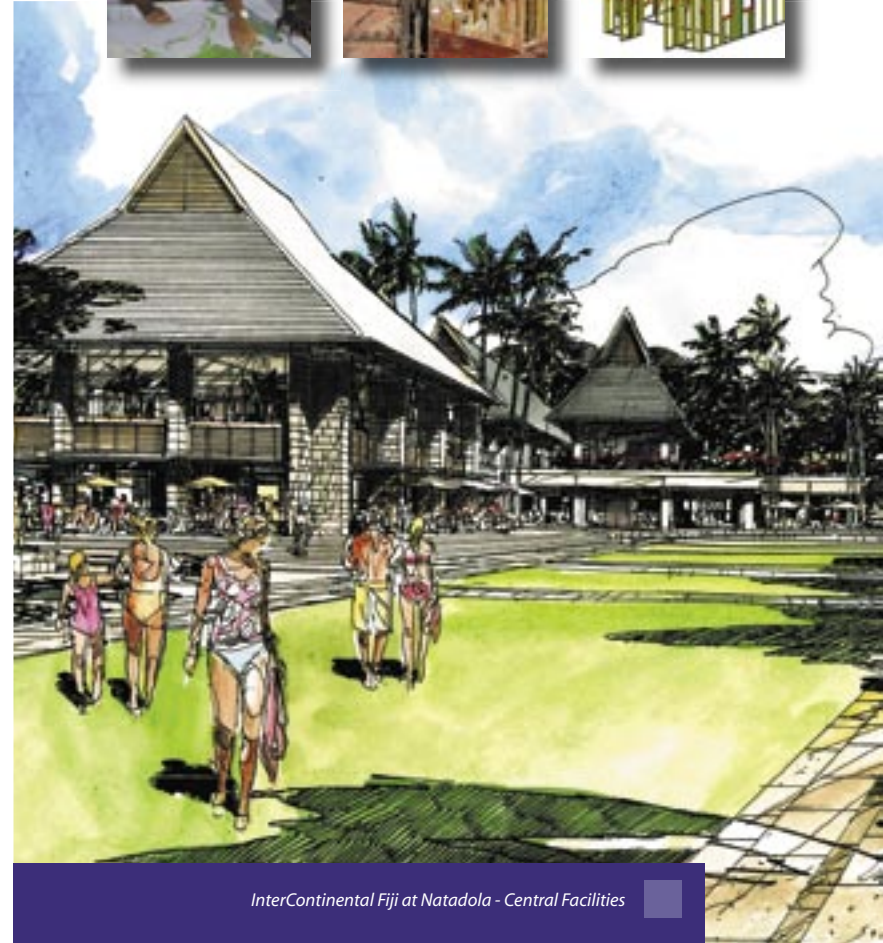
EAM provides its clients with a wide range of products and services adapted to each project to match the requirements of the owner, and sets up in each particular case a specific organisation, engineering and management teams, methods and planning specialists, software systems, etc.

EAM provides services from the initial programming or feasibility study stage through to final commissioning, discharging the functions of management, organisation, liaison, engineering design and supervision and managing projects to meet the desired criteria:

### Quality, Cost and Time Schedule

EAM anticipates and monitors the key project parameters to avoid unforeseeable events in design and execution.

EAM can also take up projects on a design and build basis, thus acting as turnkey contractor.



InterContinental Fiji at Natadola - Central Facilities



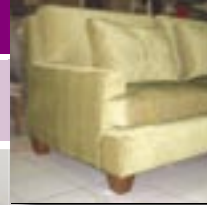


## Merger and Acquisition

EAM Merger and Acquisition is specialised in the search for joint operation in merger and acquisition in close co-operation with selected international partners.

Euro Asia Management's intervention can be at the following stages:

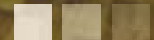
- Corporate Analysis
- SWOT Analysis
- Strategic Planning
- Audit
- Negotiation
- Equity Structuring
- Organisation and Management
- Data Processing



**EUROASIA**  
HOTEL CONTRACT

**Euro Asia Hotel Contract, operating from Singapore and Jakarta, is specially dedicated to offer full procurement services, as well as turnkey contracts, for the hospitality business with a speciality in resort hotel projects**

[euroasia-hotelcontract.com](http://euroasia-hotelcontract.com)





10-11

## Furniture

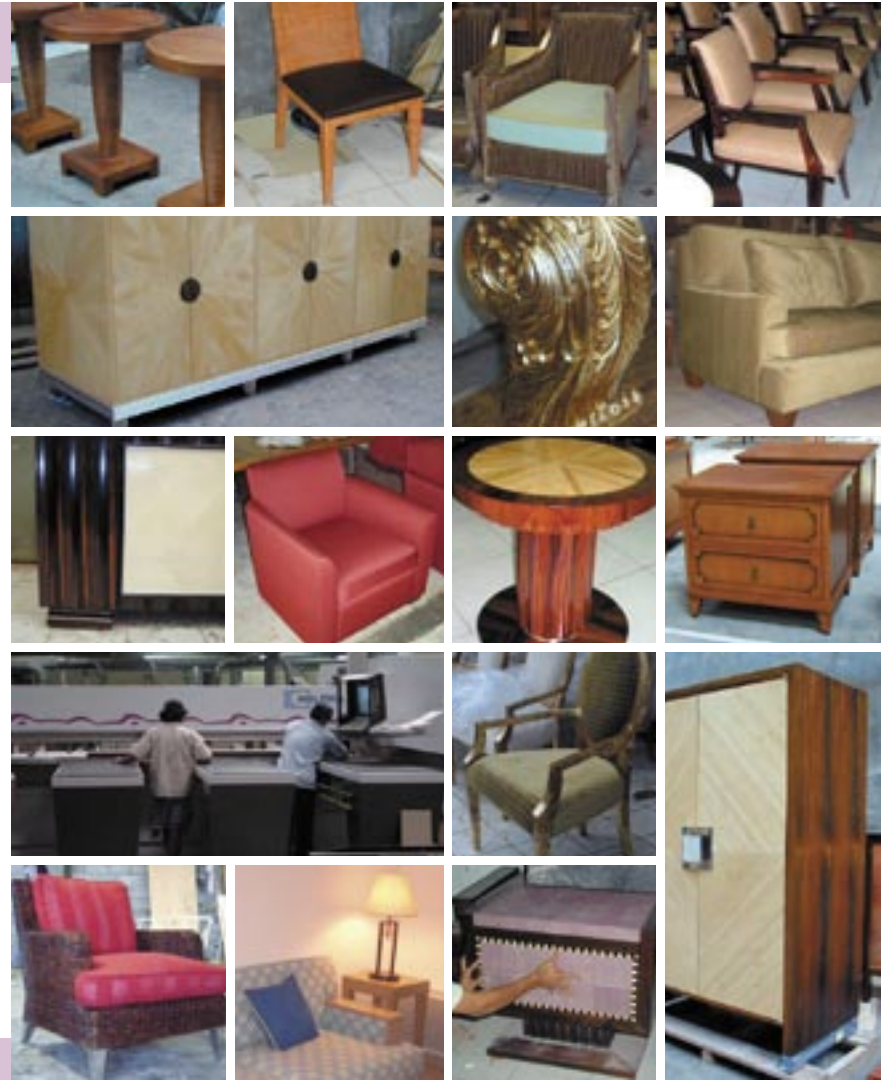
EAM designs and fabricates wooden furniture and fits out luxury hotels and interiors where a consistently high standard is required (indoor and outdoor furniture, built-in cabinets, wall paneling, etc.).

Our experts are all skilled professionals each having over 15 years' experience of the completion of luxury hotels with the most famous designers and hotel brands (Four Seasons, Grand Hyatt, Le Meridien, InterContinental).

We have selected the best Indonesian furniture manufacturers using the most advanced equipment together with skilled workers experienced in the most prestigious hotel project contracts in the world.

Our manufacturers work with all available solid and veneer timber. They are also specialized in carving and marquetry to the highest standard.

Case goods can be easily combined with glass, metal, stone, rattan or fabric. All the timber used is properly kiln-dried and strict quality control is observed during all manufacturing by our team.





## Procurement

Euro Asia Hotel Contract has a division to support the needs of overseas professional buyers looking for quality products suitable for hotels, resorts or residential development, such as homeware, custom lighting, linen, artifacts, operating equipment, as well as floor and wall finishes and upholstery.

We are committed to the procurement of high quality products at the best price with a reasonable fee to cover all aspects of the order process from sourcing to shipping.

Our team inspects and reports on the quality of goods to ensure that they comply with the required and determined standard.



EUROASIA  
TIMBER INDUSTRY

**Euro Asia Timber Industry,  
established in Indonesia,  
is engaged in design and  
production of prefabricated  
knock-down timber houses  
and bungalows**

[euroasia-timberindustry.com](http://euroasia-timberindustry.com)



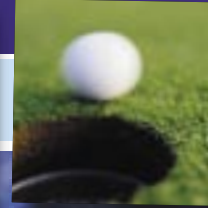


## Timber Industry

The prefabricated timber “knock-down” concept for bungalow, fare, restaurant, pergola, gazebo, bridge, pontoon, etc is developing rapidly and presents numerous advantages, especially in tropical and subtropical countries:

- *Natural aesthetics of tropical hardwood.*
- *Ease and speed of implementation.*
- *Low environmental impact.*
- *Thermal and phonic insulating features.*
- *Cost effectiveness.*

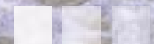
Our production facility in Indonesia combines Indonesia’s rich ancestral craftsmanship and competent workforce with the strict control of European specialists.



APRIL  
DEVELOPMENT

**Asia Pacific Resort International  
is specialised in providing  
a comprehensive range of  
development and management  
services to hotel and  
resort project owner**

[april-development.com](http://april-development.com)



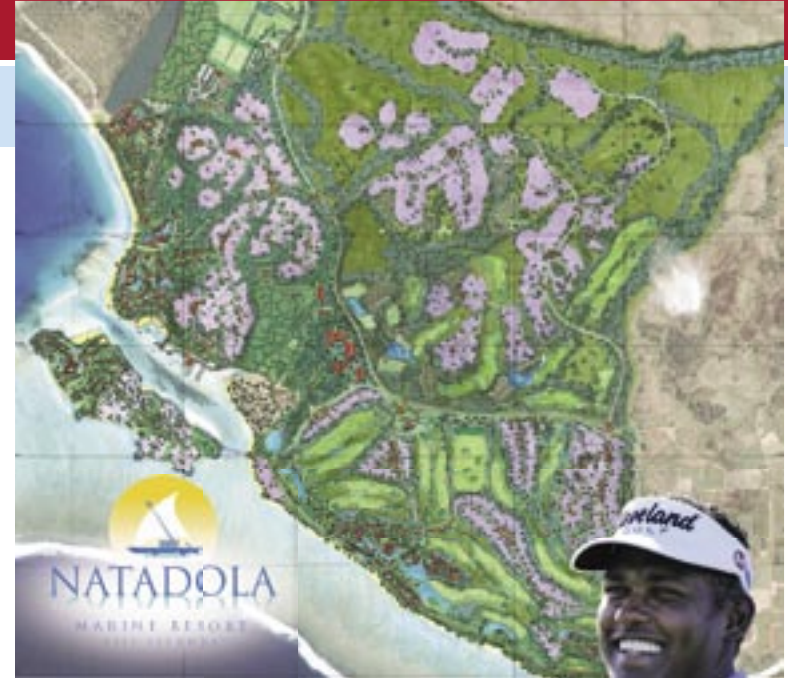


## APRIL Development

APRIL Development offers a total range of development management services acting as client's representative encompassing:

### General Management

- Development Brief
- Development Cost Budget
- Development Revenue Budget
- Development Program
- Finance / Commercial Assessment
- Concept Design
- Legal
- Project Co-ordination and Liaison
- Timely Reporting and Regular Meetings
- Insurance
- Cash Flow Monitoring



Natadola Golf & Ocean Club by Vijay Singh Design and IMG

Natadola Golf Project Site, Fiji Islands





## APRIL Development

### Marketing and Sales Management

- Promotion and Public Relations
- Marketing Strategy and Program
- Sales Activities

### Financial Management

- Project Budgeting
- Cost Control and Cost Evaluation
- Cash Flow Monitoring



## Executive Committee



**Louis Gérard Saliot**  
*President & CEO*

[gerard.saliot@euroasia-group.com](mailto:gerard.saliot@euroasia-group.com)



**Robert Sidi**  
*Vice President  
Finance & Administration  
Group Advisor*

[robert.sidi@euroasia-group.com](mailto:robert.sidi@euroasia-group.com)



**Jacques Quibel**  
*Vice President  
Technical Group Advisor  
Business Development*

[jacques.quibel@euroasia-group.com](mailto:jacques.quibel@euroasia-group.com)



**Patrick E Maille**  
*Euro Asia Hotel Contract  
Vice President  
Technical Services*

[patrick.maille@euroasia-hotelcontract.com](mailto:patrick.maille@euroasia-hotelcontract.com)



**Subhas Lakhotia**  
*Euro Asia Hotel Contract  
Vice President  
Finance & Administration*

[subhas.lakhotia@euroasia-group.com](mailto:subhas.lakhotia@euroasia-group.com)



**Keni Dakuidreketi**  
*APRIL Development  
Vice President  
Natadola Project Director*

[keni.dakuidreketi@natadolafiji.com](mailto:keni.dakuidreketi@natadolafiji.com)

### SINGAPORE

300 Beach Road #26-07  
The Concourse  
Singapore 199555  
Tel +65 6396 6703  
Fax +65 6396 6439

### INDONESIA

Jalan Ampera Raya No.30  
Jakarta 12550  
Indonesia  
Tel +62 21 7884 3548  
Fax +62 21 7884 3547

### EUROPE

38, rue de Berri  
75008 Paris  
France  
Tel +33 1 4694 6754  
Fax +33 1 4256 0544

### HONG KONG

68 Hing Man Street  
Shau Kei Wan  
Central Hong Kong  
Tel +852 2526 6714  
Fax +852 2840 0783

### FIJI

99 Gordon Street  
Suva  
Fiji Islands  
Tel +679 331 8420  
Fax +679 331 8421

### FRENCH POLYNESIA

Centre Puea Pahonu  
2nd Floor, Fare Ute  
Papeete, Tahiti  
Tel +689 82 16 16  
Fax +689 82 16 17



### WEBSITE

euroasia-group.com  
april-development.com  
natadolafiji.com

### EMAIL

info@euroasia-group.com  
info@april-development.com  
info@natadolafiji.com

**EURO****ASIA**  
MANAGEMENT  
GROUP



EUR  ASIA  
MANAGEMENT  

---

GROUP